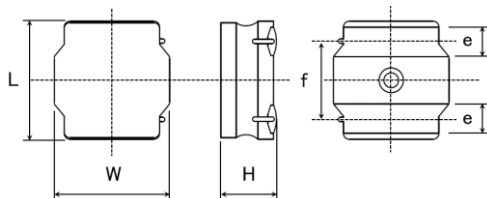


Spec Sheet

Wire-wound Metal Power Inductors MCOIL™ LSDP series for General Electronic Equipment

LSDPD4040WKT1R5MM

■ Features

Item Summary

1.5uH $\pm 20\%$, 4.6A, 4.0x4.0x2.0mm
 Standard packing quantity(minimum)
 Taping Embossed 700pcs

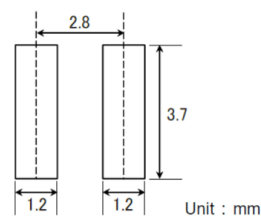
■ Products characteristics table

| | |
|--|-------------------|
| Inductance | 1.5 uH $\pm 20\%$ |
| Case Size(mm) | 4.0x4.0 |
| Rated Current(max) | 4.6 A |
| Saturation Current(max) | 6.2 A |
| Saturation Current(typ) | 6.5 A |
| Temp. Rise Current(max) | 4.6 A |
| Temp. Rise Current(typ) | 5.6 A |
| DC Resistance(max) | 31 m Ω |
| DC Resistance(typ) | 27 m Ω |
| LQ Measuring Frequency | 1MHz |
| Operating Temp. Range (Including-self-generated heat) | -40 to +125°C |
| Temperature characteristic (Inductance change) | $\pm 10\%$ |
| RoHS Compliance(10 subst.) | Yes |
| REACH Compliance(223 subst.) | Yes |
| Halogen Free | Yes |
| Soldering | Reflow |

■ External Dimensions

| | |
|-------------|------------------|
| Dimension L | 4.0 \pm 0.2 mm |
| Dimension W | 4.0 \pm 0.2 mm |
| Dimension H | Max 2.0 mm |
| Dimension e | 1.2 \pm 0.2mm |
| Dimension f | 2.5 \pm 0.2mm |

■ Recommended Land Patterns



【Recommended Land Pattern】

Surface Mounting

- Mounting and soldering conditions should be checked beforehand.
- Applicable soldering process to these products is reflow soldering only.

The data is reference only. Electrical characteristics vary depending on environment or measurement condition.
 TAIYO YUDEN reserves the right to make change to the data at any time without notice.
 Before making final selection, please check product specification.